

Shark[®]

S2901UK

OWNER'S GUIDE



IMPORTANT SAFETY INSTRUCTIONS

For Household Use Only

WHEN USING YOUR **SHARK®** STEAM MOP, BASIC SAFETY PRECAUTIONS SHOULD ALWAYS BE FOLLOWED, INCLUDING THE FOLLOWING:

READ ALL INSTRUCTIONS BEFORE USING YOUR **SHARK®** MULTI-FUNCTION STEAM POCKET MOP LITE.

DANGER OF SCALDING.

Please use caution when using the steam mop. The steam emitted from the steam mop is very hot.

IMPORTANT:

This appliance is not intended for use by persons with reduced physical, sensory or mental capabilities, or lack of experience and knowledge, unless they have been given supervision or instruction concerning use of the appliance by a person responsible for their safety.

Children shall not use or play with this appliance. **Close supervision** is necessary to keep appliance out of reach of **children** during use and cooling.

WARNING: TO REDUCE THE RISK OF FIRE, ELECTRIC SHOCK OR INJURY:

1. Use the system only for its intended use.
2. **DO NOT** use outdoors.
3. **DO NOT** leave the appliance unattended when plugged in. Always unplug the power cord from the electrical outlet when not in use and before servicing.
4. **DO NOT** allow the appliance to be used by children. Close attention is necessary when used near children, pets or plants.
5. Use only as described in this manual.
6. Use only manufacturer's recommended accessories.
7. **DO NOT** use with damaged cord or plug.
8. **DO NOT USE** if the appliance is not working, has been dropped, dropped into water, damaged or left outdoors.
9. **NO SERVICEABLE PARTS.** Incorrect re-assembly or repair can cause a risk of electrical shock or injury to persons when the appliance is used. Contact Customer Service.
10. To protect against a risk of electric shock, **DO NOT** immerse the steam mop into water or any other liquids.
11. **DO NOT** handle plug or steam mop with wet hands or operate appliance without shoes.
12. **DO NOT** pull or carry by power cord, use power cord as handle, close a door on the power cord, or pull the power cord around sharp edges or corners. Keep power cord away from heated surfaces.



13. **DO NOT** unplug by pulling on power cord. To unplug, grasp the plug not the power cord. Do not use extension cords or outlets with inadequate current carrying capacity.
14. **DO NOT** put any objects into openings. Do not use with any opening that is blocked.
15. **DO NOT** put hands or feet under the steam mop. Unit gets very hot.
16. Use **ONLY** on flat, horizontal surfaces when using in steam mop mode. Do not use on walls, counters or windows when using in steam mop mode.
17. **DO NOT** use on leather, wax polished furniture or floors, synthetic fabrics, velvet or other delicate, steam sensitive materials.
18. Liquid or steam must not be directed towards equipment containing electrical components, such as the interior of ovens.
19. **DO NOT** add cleaning solutions, scented perfumes, oils or any other chemicals to the water used in this appliance as this may damage the unit or make it unsafe for use. If you live in a hard water area, we recommend using distilled water in your steam mop.
20. When in use, **NEVER** turn the appliance over or on its side. **NEVER DIRECT STEAM TOWARDS PEOPLE, ANIMALS OR PLANTS.**
21. **NEVER LEAVE THE STEAM MOP IN ONE SPOT ON ANY SURFACE FOR ANY PERIOD OF TIME WHEN THE CLEANING POCKET IS ATTACHED AS THIS WILL DAMAGE YOUR FLOORS.**
22. Carefully remove the cleaning pocket immediately after you have unplugged and allowed the steam mop to cool.
23. When cleaning the steam mop, unplug the power cord from the electrical outlet and clean with a dry or damp cloth. Do not pour water or use alcohol, benzene or paint thinner on the unit.
24. Extreme caution should be exercised when using this appliance to clean stairs.
25. Never use steam mop without the cleaning pocket attached.
26. Keep your work area well lit.
27. Store steam mop indoors in a cool, dry place.
28. To avoid circuit overload, do not operate another appliance on the same socket (circuit) as the steam cleaner.
29. If an extension cord is absolutely necessary, an extension cord rated a minimum of 15 ampere, 2.08mm² (14 AWG) cord should be used. Cords rated for less amperage may overheat. Care should be taken to arrange cord so that it cannot be pulled or tripped over.
30. **DO NOT** leave unattended when the system is connected to a power supply or electrical outlet. Turn off all controls before unplugging the unit.
31. **DO NOT** store unit with damp or wet cleaning pocket attached. Never leave the steam mop in one spot on any surface for any period of time with a damp or wet cleaning pocket attached as this will damage your floors.
32. Always unplug and allow the steam mop to cool before removing or changing mop heads.
33. Make sure that the water tank door is closed when using the appliance.



WARNING: Your steam mop is designed to clean hard floor surfaces that will withstand high heat. Do not use on unsealed wood or unglazed ceramic floors. On surfaces that have been treated with wax or some no wax floors, the sheen may be removed by the heat and steam action. It is always recommended to test an isolated area of the surface to be cleaned before proceeding. We also recommend that you check the use and care instructions from the floor manufacturer.

SAVE THESE INSTRUCTIONS

This appliance complies with the WEEE-Directive 2002/96/EC on the disposal of electrical and electronic equipment (WEEE).

This appliance complies with the European directives for electromagnetic compatibility (EMC) 2004/108/EC and its revisions, as well as Low Voltage Directive (LVD) 2006/95/EC and its revisions.



This marking indicates that this product should not be disposed with other household wastes throughout the EU. To prevent possible harm to the environment or human health from uncontrolled waste disposal, recycle it responsibly to promote the sustainable reuse of material sources. To return your used device, please use the return and collection systems or contact the retailer where this product was purchased. They can take this product for environmental safe recycling.

Disconnect the plug from mains after use.

Although the product is not provided with standby mode, it still fulfills the requirements of 1275/2008/EC - the directive for Eco-Design requirements since according to technical justification, it is considered as inappropriate to provide standby and off modes when connecting to mains. To reduce energy consumption be sure to unplug the unit after use.

Guarantee: This product is unconditionally guaranteed for one year against all defects of workmanship and materials. This guarantee does not affect your statutory rights. If this product proves unsatisfactory please contact our customer service department on freephone 0800 862 0453 or by e-mail ukservice@euro-pro.com.

THIS MANUAL COVERS MODEL NUMBER:

S2901UK 11

TECHNICAL SPECIFICATIONS

Voltage: 220-240V~, 50/60Hz

Power: 1250 Watts

Water Capacity: 350 ml

RoHS



FREEPHONE 0800 862 0453

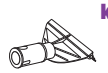
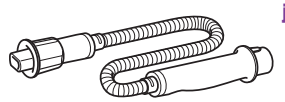
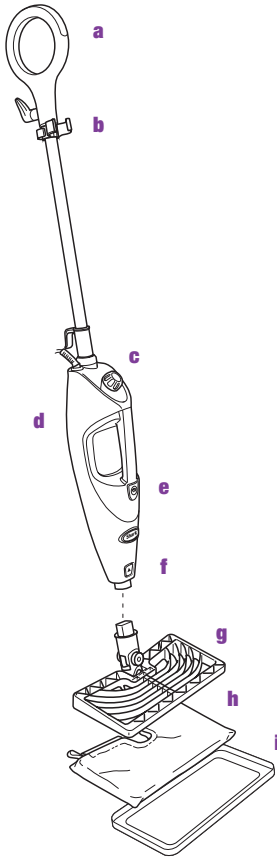
Contents

Thank you for
purchasing
the **Shark®**
Multi-Function
Steam Pocket®
Mop Lite.

Getting Started	2
Assembling Your Steam Mop	3
Using Your Steam Mop	4
Using Your Carpet Glider	5
Using Your Handheld Steamer	6
Using Your Removable Handheld Steamer with Different Accessories.....	7
Care of Your Steam Mop	10
Troubleshooting Guide	12

Getting Started

When assembling your steam mop there may be a little water in or around the water tank. This is because we test all our steam mops 100% before you buy them, so you get a quality **Shark® Multi-Function Steam Pocket® Mop Lite**.



- a** Mop Handle
- b** Cord Clip
- c** Water Tank Cap
- d** Handheld Steamer
- e** Power Button
- f** Release Button
- g** Rectangle Mop Head
- h** Cleaning Pocket for Rectangle Head (x2) (P151W)
- i** Carpet Glider (XC63501)

- j** Accessory Hose (3010F02901)
- k** Window Squeegee (1078S0)
- l** Concentrator Nozzle (3011F02901)
- m** Grout Scrubber Brush (1081S0)
- n** Filling Flask (1039S0)

Assembling Your Steam Mop

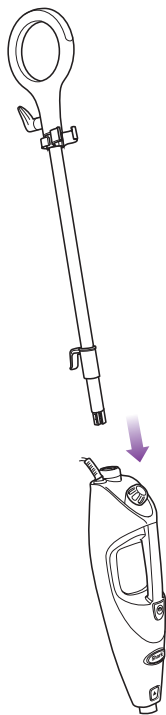


fig. 1

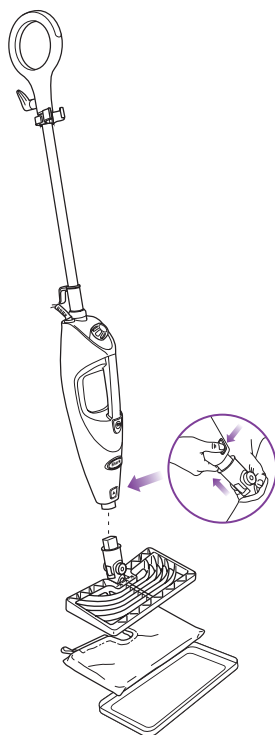


fig. 2

IMPORTANT: Always make sure the mop is **UNPLUGGED** from the wall when not in use. Never fill the mop, attach the mop head, change or remove the cleaning pocket when the mop is plugged into the wall. To prolong the life of your **Shark® Multi-Function Steam Pocket® Mop Lite** we recommend using distilled water. Make sure you only add water to the tank. Chemicals or cleaning solution may damage the appliance and could be unsafe for you and your family.

STEAM MOP ASSEMBLY

- 1 Insert the Mop Handle end with the “▼” facing the front of the unit into the handheld steamer. Push the mop handle in until you hear it click into place. (fig. 1)
- 2 Select the Rectangle or Triangle mop head and the desired cleaning pocket. Fit one side of the pocket onto the head first, then using the loop, pull the pocket over the head. Attach the quick fasteners on the top of the pocket to secure in place.
- 3 Snap the mop head into the mop body by lining up the groove on the back of the mop body with the groove on the back of the mop head. Push until you hear it latch into place. Press the release button to remove or change the mop head. (fig. 2)

Using Your Steam Mop

- ! IMPORTANT:** Make sure you do not use the mop without attaching a cleaning pocket and adding water to the tank first. When you are using the mop for the first time, it might take longer than the normal 30 seconds to start steaming.

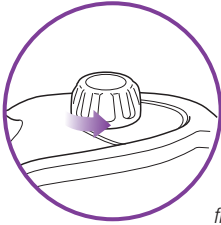


fig. 3

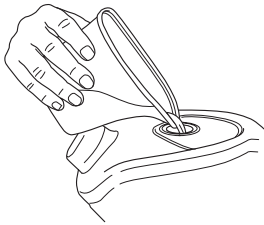


fig. 4

- 1 Turn the water tank cap counter clockwise and remove from the tank. **(fig. 3)**
 - 2 Use the filling flask and pour water into the tank. Do not overfill. Replace the cap on the water tank. **(fig. 4)**
- ! IMPORTANT:** Do not use on unsealed wood or unglazed ceramic floors. On surfaces that have been treated with wax or some no wax floors, the sheen may be removed by the heat and steam action. It is always recommended to test an isolated area of the surface to be cleaned before proceeding. We recommend that you check the use and care instructions from the floor manufacturer.

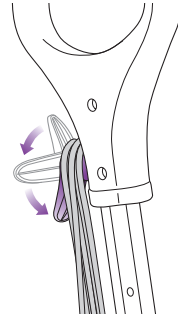


fig. 5

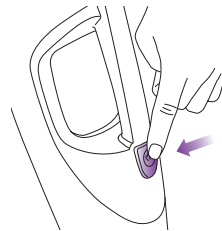


fig. 6

- 3 Pull and twist the quick release cord holder to unwrap the power cord completely. Plug into an electrical outlet. **(fig. 5)**
 - 4 Press the power button to turn the unit on. **(fig. 6)**
 - 5 Clean your floors with a forward and backward motion.
- ! NOTE:** To prolong the life of your Steam Mop, we recommend using distilled water.
- ! NOTE:** Sweep or vacuum your floors prior to cleaning with your Steam Mop.

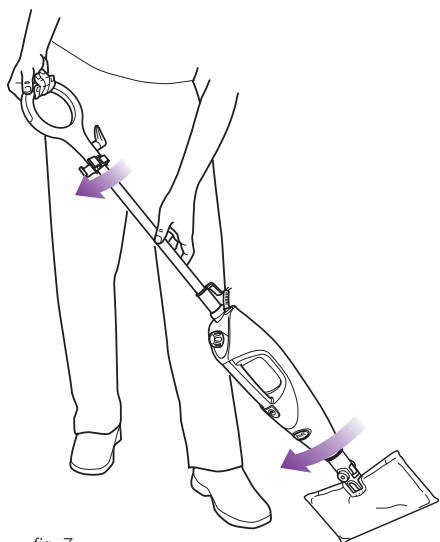


fig. 7

- 6 Use the shaggy side of the cleaning pockets to lift up and lock away all the dirt and debris and the scrubbing side to break up the tough stains. **(fig. 7)**
 - 7 When the water tank is empty, the Steam Mop will stop producing steam. You can refill the water tank at any time as long as the mop is unplugged from the outlet. Follow the instructions from page 4. This applies to switching the mop head or cleaning pocket as well.
- ⚠ NOTE:** Please wait 2-3 minutes for the Steam Mop to cool off before switching the mop head or the cleaning pocket. Never leave the Steam Mop with a damp/wet cleaning pocket on any floor.
- 8 When you are done, press the power button to turn the steam mop off.

Using Your Carpet Glider

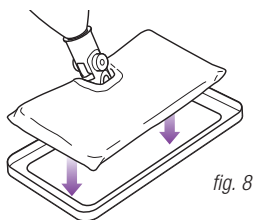



fig. 8

 The Steam Mop will not clean your carpeting or area rugs. However, it is great for grooming and freshening.

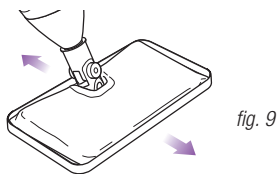


fig. 9

THE CARPET GLIDER

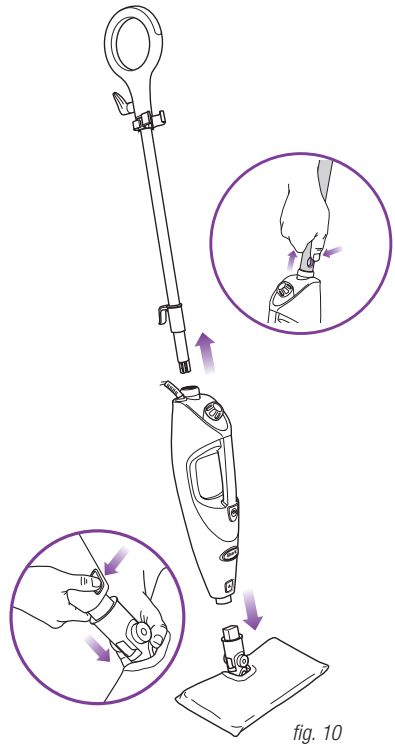
- 1 The Carpet Glider can be used with the Rectangular Head to lightly steam your carpet and area rugs. Just place the mop head with cleaning pocket attached into the glider. **(fig. 8)**
- 2 Move the Steam Mop back and forth across a section of the carpet. **(fig. 9)**

Using Your Handheld Steamer

Your **Shark® Multi-Function Steam Pocket® Mop Lite** is designed to clean surfaces that will withstand high heat and moisture. Do not use on unsealed wood surfaces (especially wooden antique furniture), unglazed ceramic tile, painted surfaces or surfaces that have been treated with wax, oils, varnishes, or shellac. The sheen may be removed by the heat, steam, and friction of the cleaning tools. Lacquer and polyurethane coatings provide a hard durable protective finish that withstands moisture, but it is always recommended to test an isolated area of the surface to be cleaned before proceeding.

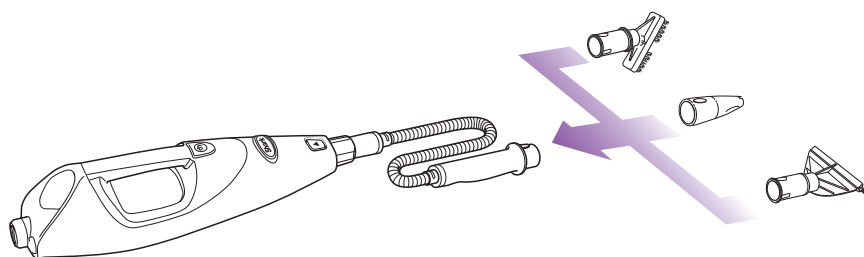
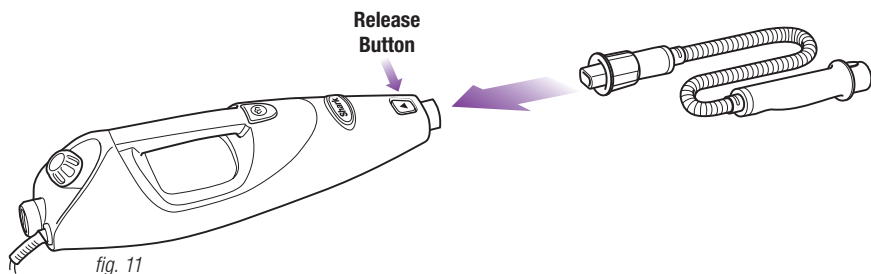
We also recommend you check the use and care instructions from the surface manufacturer.

When cleaning finished wood surfaces, use broad, continuous cleaning strokes. To prevent surface damage, avoid focusing steam or allowing the cleaning tools to sit in one spot for any amount of time.



- 1** To remove the Handheld Steamer, press and hold down the Handle Release Button while pulling out the handle. **(fig. 10)**
- 2** To remove the mop head, press the mop head release button and pull the mop head off. **(fig. 10)**

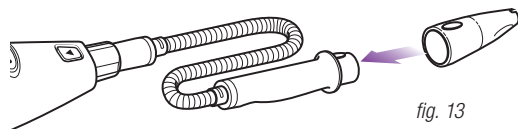
Using Your Removable Handheld Steamer with the Different Accessories



- 1 First attach the Accessory Hose to the Handheld Steamer by snapping the Accessory Hose into the main nozzle. **(fig. 11)**
- 2 Select the desired cleaning tool for use. Follow the cleaning tool sub-assembly instructions for the selected tool. **(fig. 12)**
- 3 To remove the Accessory Hose, press and hold down the Handheld Release Buttons. Then slide out the Accessory Hose using the grip.

- CAUTION:** Do not press the power button while attaching or removing the Accessory Hose.
- CAUTION:** Do not use the Accessory Hose without cleaning tools attached.

Using Your Removable Handheld Steamer with the Different Accessories - cont.



USING THE CONCENTRATOR NOZZLE

Cleaning Tip: The Concentrator Nozzle creates direct steam spray to clean and sanitise hard to reach nooks & crannies and other places where germs may build up. Use the Concentrator Nozzle to loosen and dislodge compact dirt often found in corner and tight places where traditional methods and cleaning tools tend to push dirt into, making it tough to reach and clean. Spray direct steam and wipe clean with a wet cloth or paper towel.

- 1 Attach the Concentrator Nozzle by pressing the nozzle onto the Accessory Hose until it clicks into place. (fig. 13)
 - 2 Press the power button to start the steamer.
For effective cleaning, hold the steam output nozzle 1-2 inches away from the surface you're cleaning.
- CAUTION:** Do not press the power button until the Concentrator Nozzle is snapped into the accessory hose of your Handheld Steamer.

- 3 To remove the Concentrator Nozzle, press and hold the accessory release button, then pull it out of the Accessory Hose.
- CAUTION:** Do not press the power button while removing the Concentrator Nozzle. Avoid touching the tip of the Concentrator Nozzle, as this will be very hot after steaming.
- NOTE:** The Handheld Steamer may continue to emit steam for a few seconds after the power button is pressed to turn the unit off. This is normal, and the steaming will eventually come to a stop.

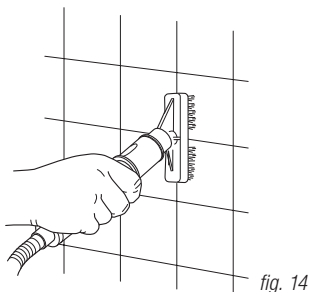


fig. 14

USING THE GROUT SCRUBBER

Cleaning Tip: The Grout Scrubber is designed for removing stubborn messes in hard-to-reach nooks, corners and in grout where focused scrubbing power may be needed. It can loosen and dislodge compact dirt often found in corners and tight places where traditional methods and cleaning tools tend to push dirt into, making it difficult to reach and clean. Scrub with the Grout Scrubber and wipe clean with a cleaning cloth.

- 1 Attach the Grout Scrubber by snapping into the handle of the Accessory Hose until it clicks into place. **(fig. 14)**
 - 2 Press the power button to start steaming.
 - 3 To remove the Grout Scrubber, press and hold down the Accessory release button. Then slide out the tool out.
- CAUTION:** Turn the unit off before attaching or removing the Grout Scrubber.

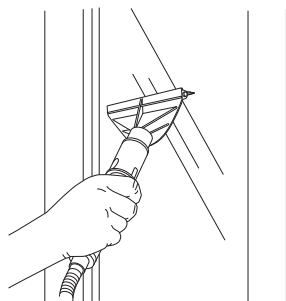


fig. 15

USING THE WINDOW SQUEEGEE

Cleaning Tip: To use the window squeegee, work with the vapor jet down using top to bottom movements. To do this without leaving streaks, use lateral movements from the top to the bottom of the surface.

- CAUTION:** Always avoid any sudden changes in temperature to prevent breakage of cracks in windows.
- 1 Attach the Window Squeegee by snapping into the handle of the Accessory Hose until it clicks into place. **(fig. 15)**
 - 2 Press the power button to start steaming.
 - 3 To remove the Window Squeegee, press and hold down the Accessory release button. Then slide out the Window Squeegee.
- CAUTION:** Turn the unit off before attaching or removing the Window Squeegee.

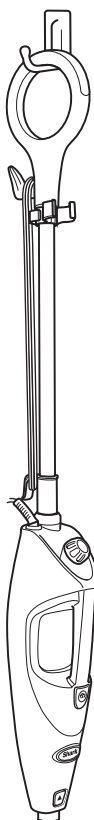


fig. 16

AFTER USE AND STORAGE

- 1** Press the power button to turn the unit off. Unplug the cord from the outlet and place the mop into the upright position. Let the unit cool for 2-3 minutes.
- 2** When you have finished using the Handheld Steamer, reattach the handle to the handheld steamer.
- 3** Remove the cleaning pocket from the mop head by releasing the quick fasteners and using the loop on the side of the pocket, avoiding contact with the hot pocket or dirt.
- 4** Empty the water tank before storage. Remove the water tank cap and empty the tank over a sink. Replace the water cap.
- 5** To store the **Shark® Multi-Function Steam Pocket® Mop Lite** hanging up, first remove the head (after it has cooled and the steam has been released) then hang on a large hook. **(fig. 16)**

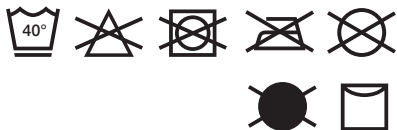
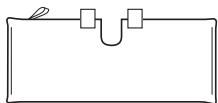


fig. 17



fig. 18

CARE OF YOUR CLEANING POCKETS

- 1 We recommend washing your cleaning pocket separately from other fabrics to avoid picking up lint. For optimal cleaning performance, the pockets may need to be washed up to (3) three times. **Only use liquid detergent (no powder detergent). Do not use any fabric softeners or bleach.** Line dry. Do not tumble dry. (fig. 17)
- 2 If there are loose threads on the cleaning pocket, carefully cut the thread with scissors. Do not pull on them or cut at the base. (fig. 18)
- ⚠ **IMPORTANT:** The cleaning pocket may be very hot from the steam. Use caution when removing. Let the unit cool for 2-3 minutes.

DECALCIFYING YOUR STEAM MOP

Calcium and mineral deposits can build up and impact the performance of your steam mop over time. To extend the life of your product we recommend that you use distilled water.



fig. 19

CLEANING THE NOZZLE

NOTE: To prevent clogging, it is recommended that you periodically clean the Direct Steam Nozzle and the extension hose stem.

- 1 Your Handheld Steamer should not normally require cleaning, however, should you notice a decrease in the steam output, it may be necessary to remove mineral deposits built up around the nozzles.
- 2 Unplug the cleaner from the electrical outlet.
- 3 Use a small diameter stiff metal wire, such as a straightened metal paperclip, and carefully insert the end of the wire into the nozzle orifice. See illustration above. (fig. 19)
- 4 Move the wire back and forth several times to remove any deposits.
- 5 Plug in the appliance to the power outlet and test steam output.

Troubleshooting Guide

PROBLEM	POSSIBLE REASONS & SOLUTIONS
The Shark® Multi-Function Steam Pocket® Lite Mop will not turn-on.	Your steam mop should be securely plugged into an electrical outlet only. Check your fuse or breaker.
The unit will not make steam.	Is there water in the water tank? If not, add water to your steam mop following instructions on page 4. When using the unit in the handheld mode, ensure that you are holding the handheld unit horizontally to optimise the steam output. Do not hold the handheld unit vertically as this will impede steam production. Use the hose with your chosen accessory to reach difficult areas and above floor cleaning whilst maintaining the horizontal position of the handheld unit. If the unit still does not make steam, follow the instructions on page 11 to clean the nozzle.
The Shark® Multi-Function Steam Pocket® Lite Mop leaves water on the floor.	Check to see if your cleaning pocket is too wet. We recommend you unplug the steam mop and change the cleaning pocket. Make sure the cleaning pocket is attached correctly.
The Shark® Multi-Function Steam Pocket® Lite Mop left a white spot on the floor.	Do not leave your steam mop on the floor with a damp or wet cleaning pocket. If you're using tap water, we recommend switching to distilled water. Make sure the cap is securely on the water tank.
Floors are cloudy, streaky or spotty after steaming.	The cleaning pocket might be dirty. Flip or change the cleaning pocket. If you washed the cleaning pocket with powder detergent, then your pocket could be damaged and require replacement. Replacement pockets are available at www.sharkclean.eu . This could also be an indication of prior soap or grease residue that has accumulated on the floor. As our steam mops use only a small amount of water, it may not be wet enough to rinse off the accumulation that the steam is bringing to the surface. We suggest rinsing the floor with nothing but water, letting it dry, and then steam mopping again with a clean pocket. One or more rinses generally removes the residue. A more stubborn case may require you to rinse the floor with a mix of one part vinegar and two parts water.
The Shark® Multi-Function Steam Pocket® Lite Mop is hard to push.	Make sure the cleaning pocket is attached correctly. Check to see if the cleaning pocket is excessively dirty. If so, replace the cleaning pocket.

Notes



Notes

Euro-Pro Europe Limited
15 Mariner Court
Calder Park
Wakefield
WF4 3FL

Freephone 0800 862 0453
www.sharkclean.eu

Technical Details

Model number:	S2901UK 11
Input:	1250 Watts
Main unit voltage:	220-240V~, 50/60Hz

COPYRIGHT © EURO-PRO OPERATING LLC 2014

Euro-Pro, Steam Pocket, and Shark are trademarks of Euro-Pro Operating LLC. All other brand names may be trademarks of their respective owners.

PRINTED IN CHINA

S2901UK_11_IB_E_141016_2

Illustrations may differ from actual product.

RoHS

